

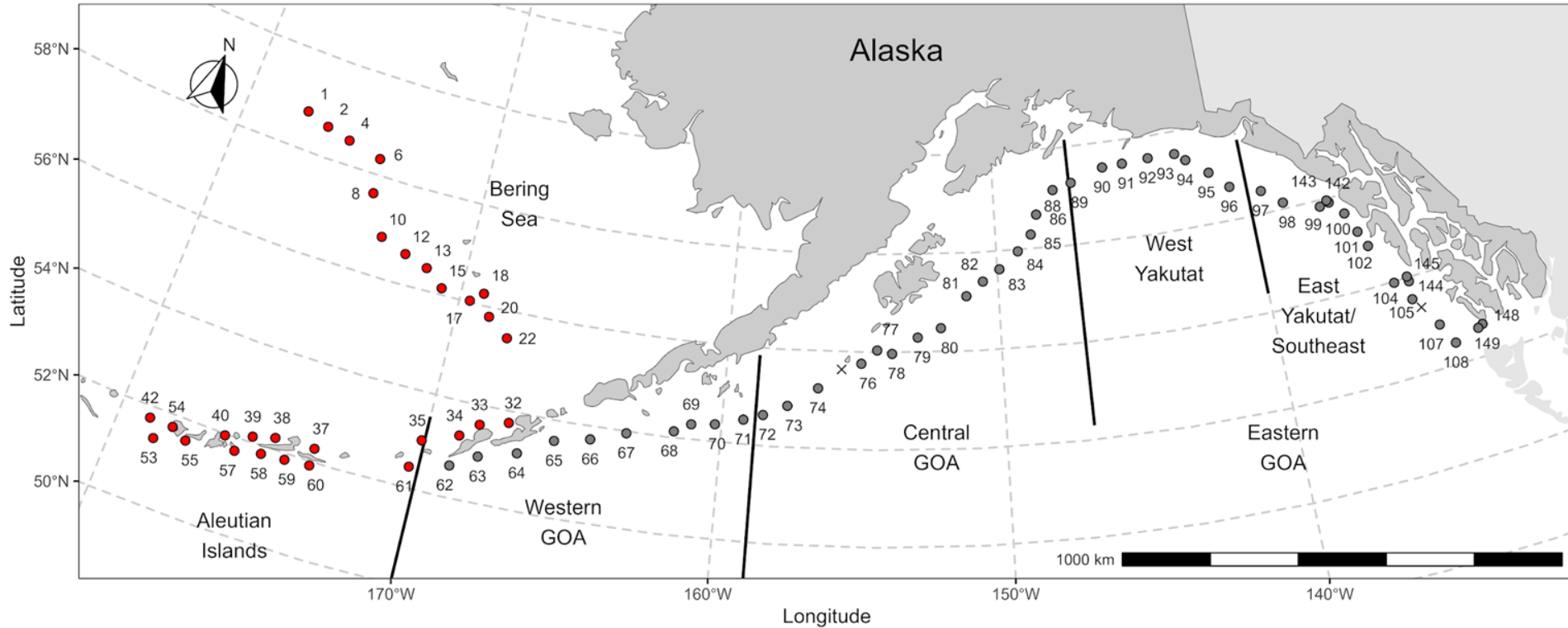
**NOAA  
FISHERIES**

# AFSC Longline Survey Freezer Longline Coalition - 2026



Kevin Siwicke, Chris Lunsford and Pat Malecha

# 2025/26 Survey Geographic Coverage



- Bering Sea – even years
- Aleutian Islands – even years
- GOA – odd years
- 180 skates per day
- 45 hooks per skate
- Data depth stratified

# 2025 GOA Survey in Numbers

- 371,700 hooks fished in 46 days
  - 126,299 sablefish caught
- 2,869 sablefish otoliths collected (length/weight/sex)
- Tagged:
  - 3,998 sablefish
  - 197 shortspine thornyhead
- Recaptured 19 tagged sablefish (18-NMFS, 1-Canadian), and 1 SST (NMFS)
- 90 temperature-depth profiles
- Special Projects:
  - 26 eyes from sablefish for stable isotope analysis (Rogers)
  - Age validation and Epigenetics: genetics, otoliths and eyes ( $\Delta 14C$ ) from 30 sablefish and 16 shortraker (Patterson/Portnoy)
- Cruise Reports found here:
  - <https://www.fisheries.noaa.gov/resource/publications-database/alaska-fisheries-science-center-technical-memorandums>

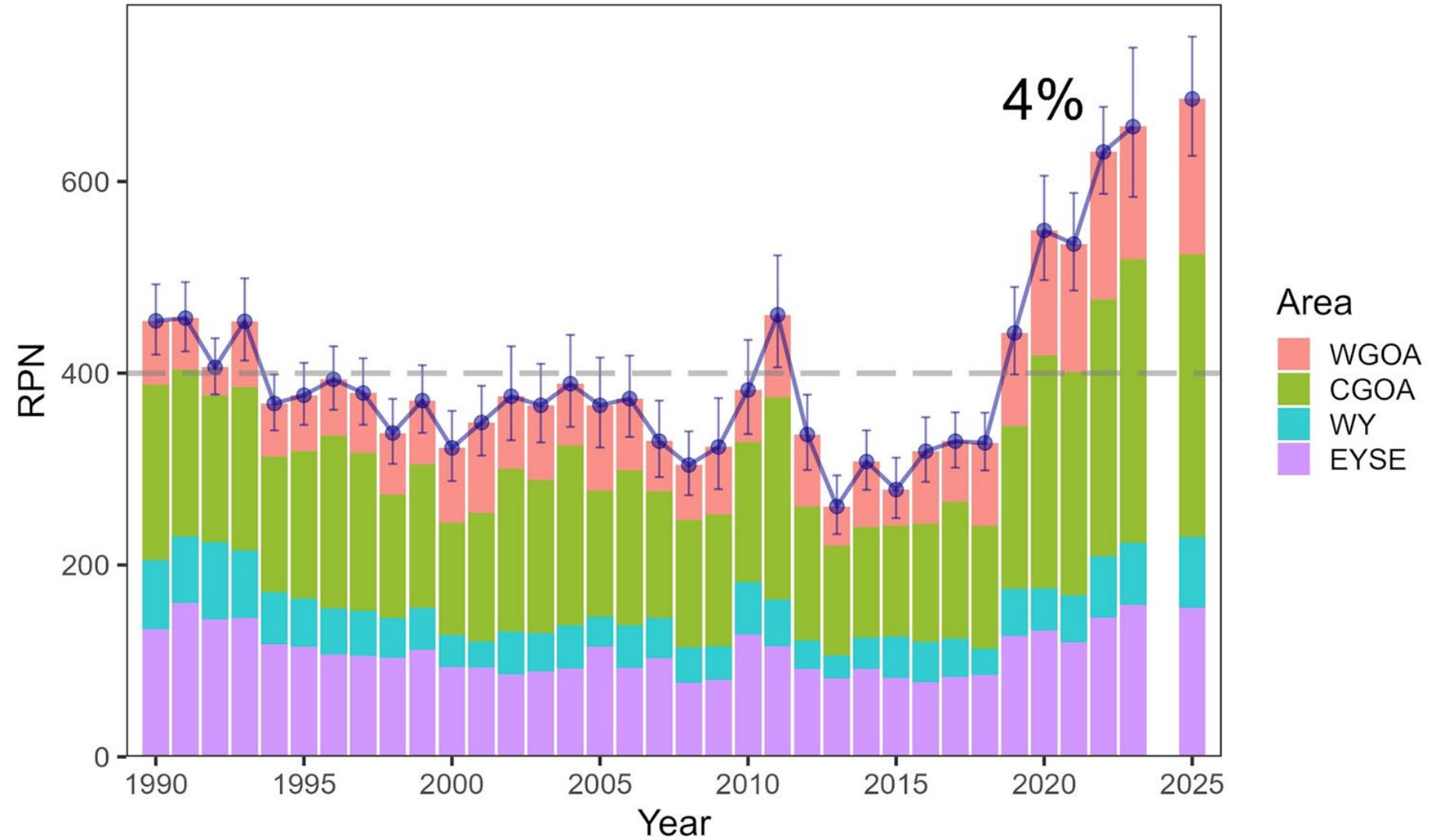


# 2025 GOA Species Lengths

Common name	Lengths collected
sablefish	93,164
shortspine thornyhead	4,347
roughey rockfish	3,392
Pacific cod	2,652
giant grenadier	1,898
shortraker rockfish	1,738
redbanded rockfish	867
arrowtooth flounder	561
yelloweye rockfish	304
Pacific grenadier	229
spiny dogfish	50
rosethorn rockfish	34
dusky rockfish	25
Greenland turbot	1
Kamchatka flounder	1
<b>Total</b>	<b>109,263</b>

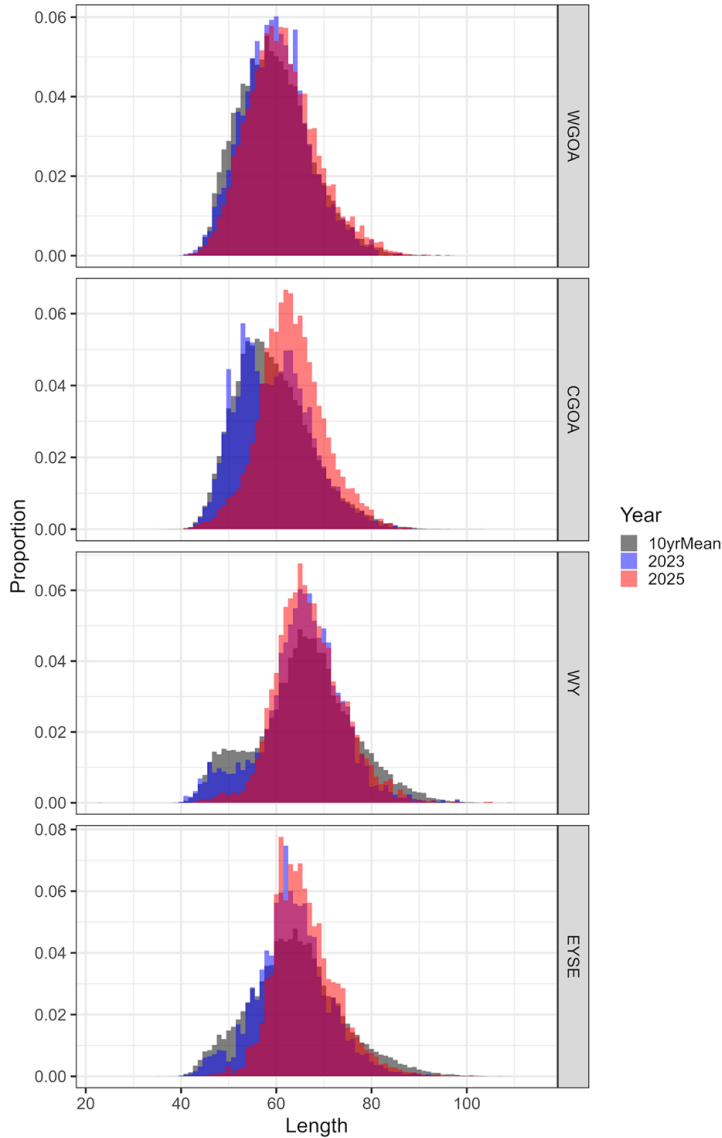


# 2025 GOA Sablefish

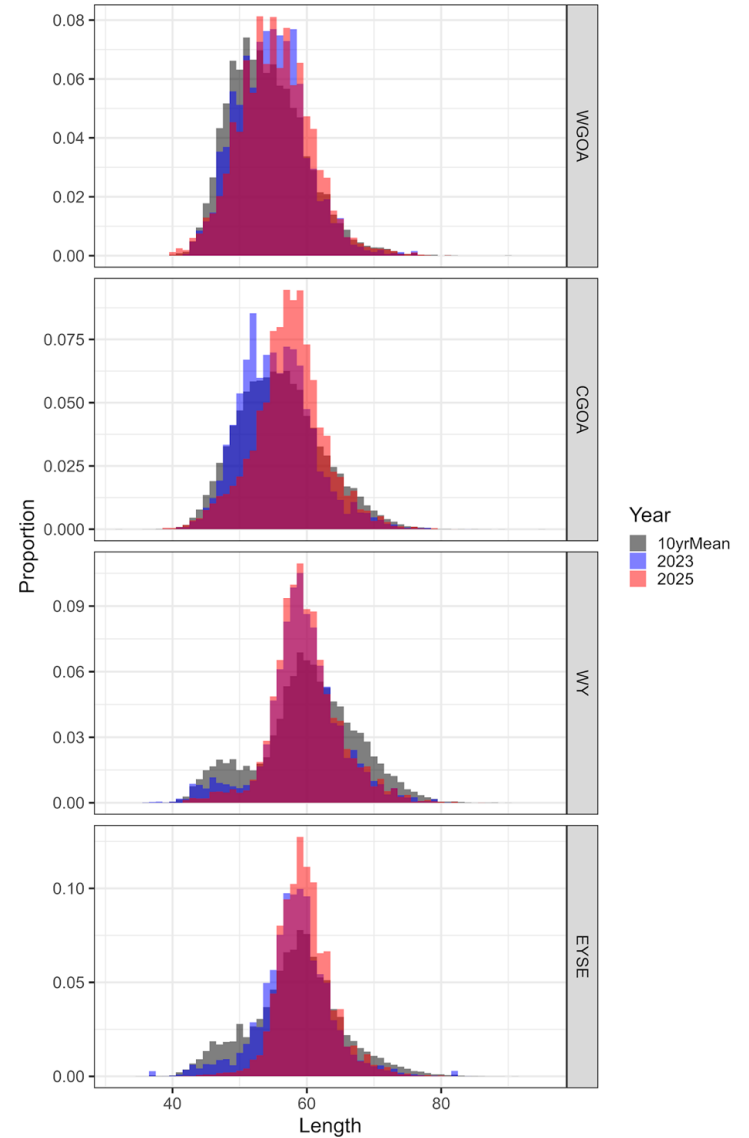


# 2025 GOA Sablefish Lengths

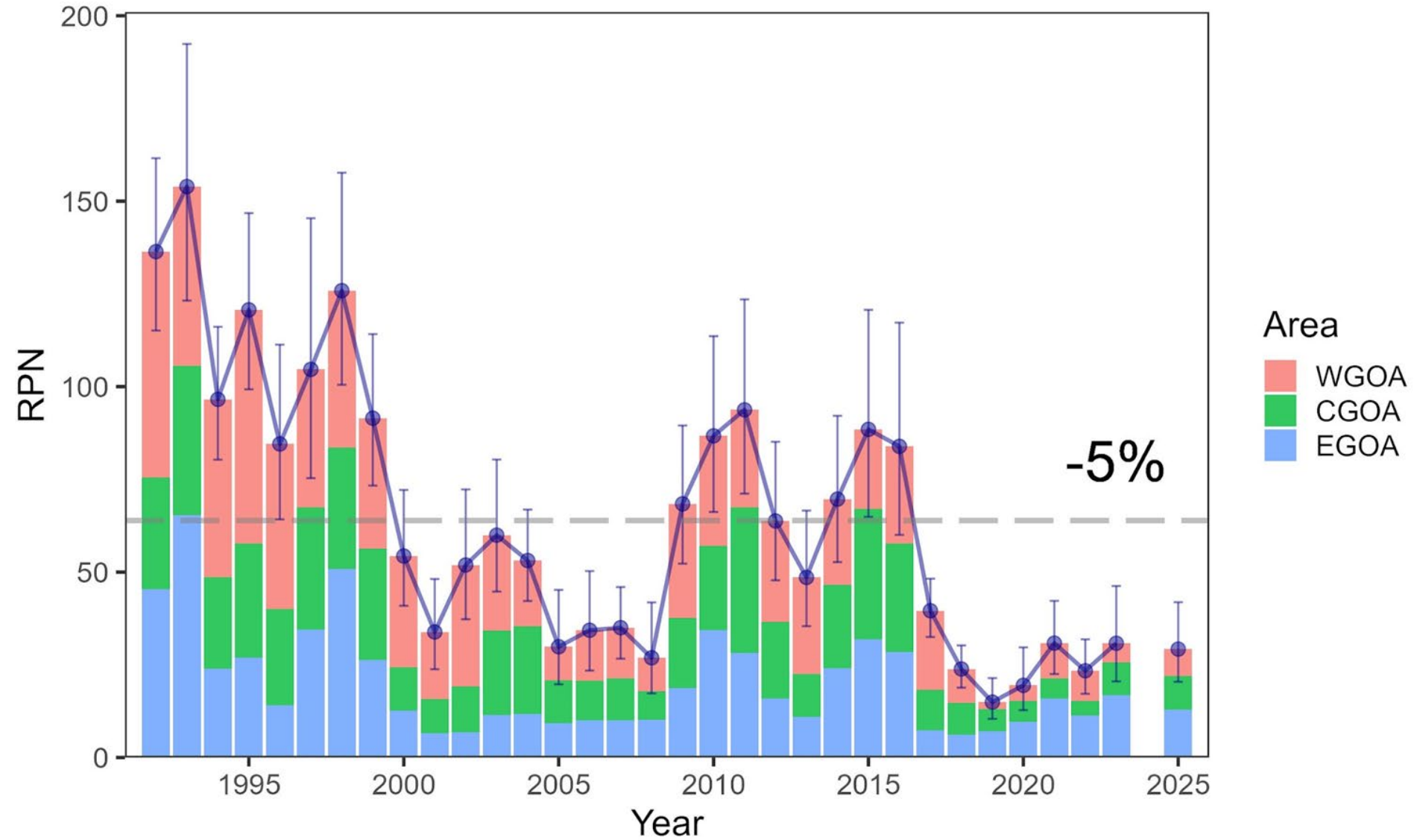
Recent female Sablefish length distributions



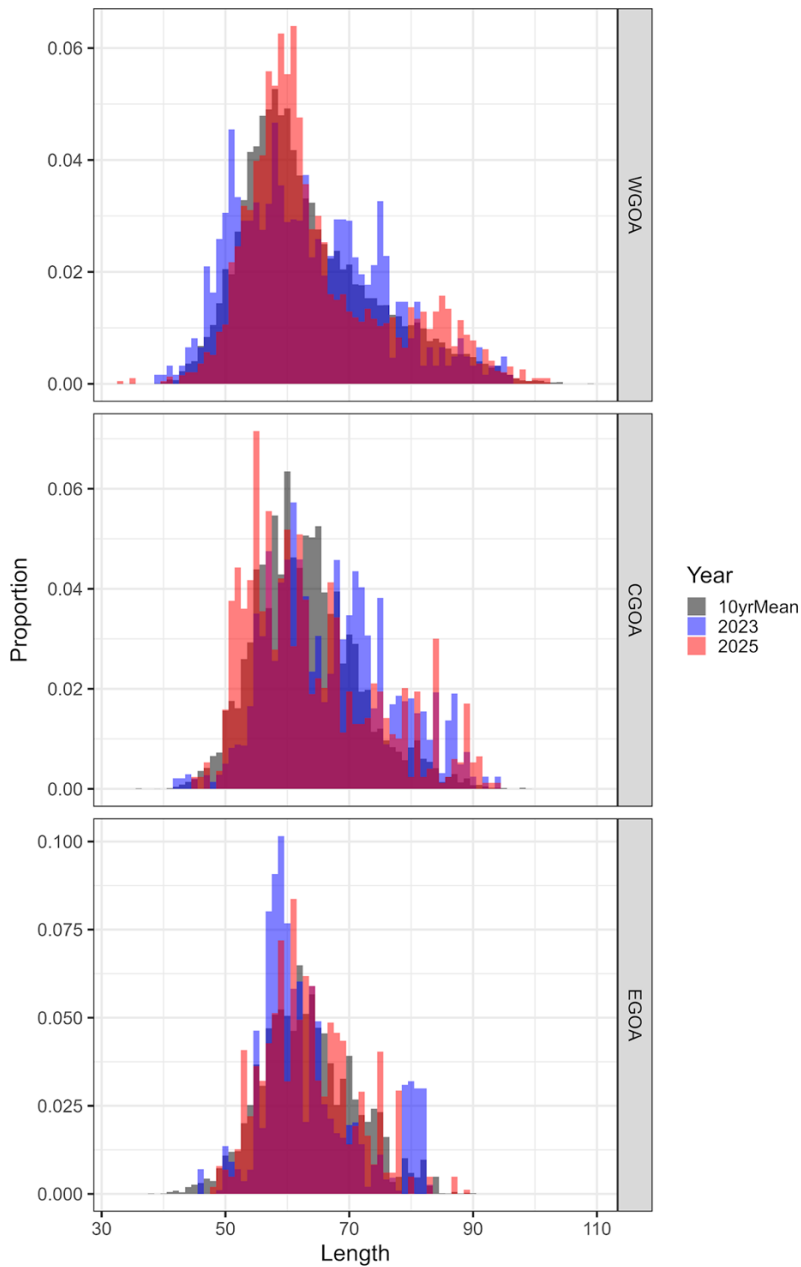
Recent male Sablefish length distributions



# 2025 GOA P. Cod



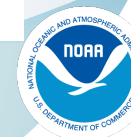
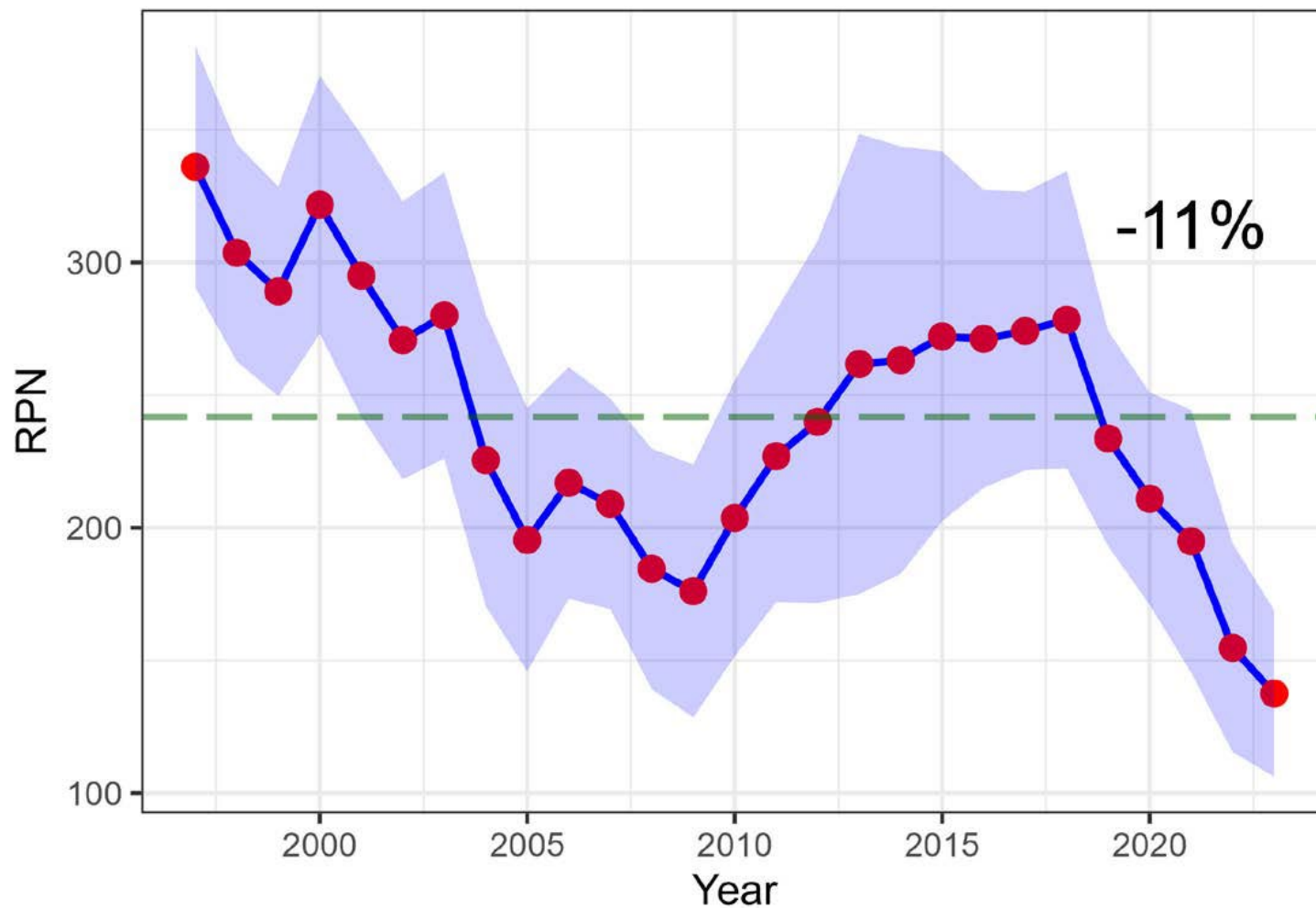
Recent P. cod length distributions



# 2025 GOA P. Cod Lengths

# BSAI P. cod – Last Sampled in 2023

BSAI P. Cod lin. interp. longline survey RPNs



# 2026 Longline Survey

- Bering Sea and Aleutian Islands
- *FV Alaskan Leader*
- Depart Dutch Harbor June 1
- Survey completed July 5
- Request fleet to avoid stations
- Survey calendar available online:



<https://www.fisheries.noaa.gov/resource/document/alaska-sablefish-longline-survey-station-schedule>

Survey contacts:

Pat.Malecha@noaa.gov

Kevin.Siwicke@noaa.gov